

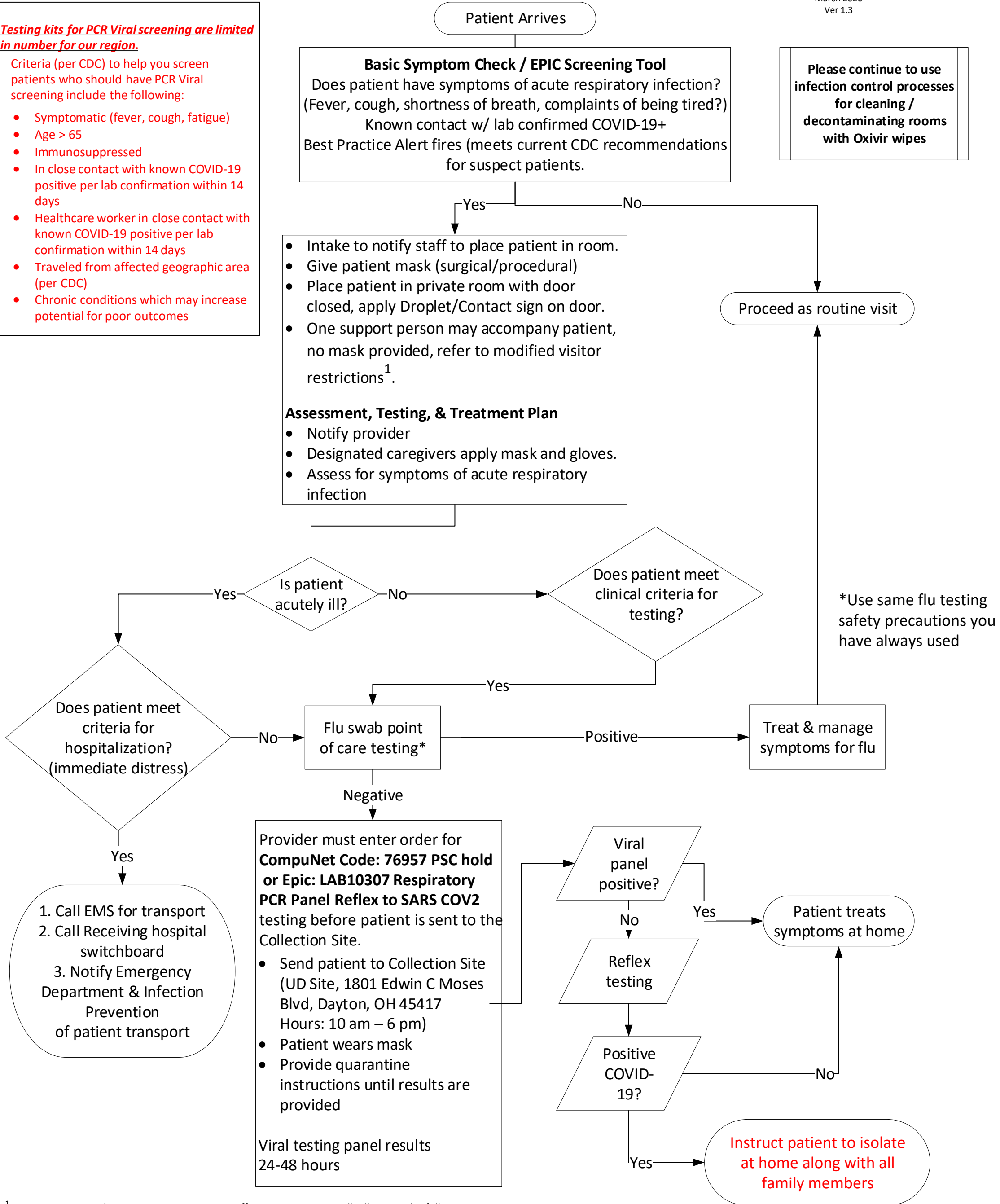
COVID-19 Patient Workflow

March 2020
Ver 1.3

Testing kits for PCR Viral screening are limited in number for our region.

Criteria (per CDC) to help you screen patients who should have PCR Viral screening include the following:

- Symptomatic (fever, cough, fatigue)
- Age > 65
- Immunosuppressed
- In close contact with known COVID-19 positive per lab confirmation within 14 days
- Healthcare worker in close contact with known COVID-19 positive per lab confirmation within 14 days
- Traveled from affected geographic area (per CDC)
- Chronic conditions which may increase potential for poor outcomes



¹ Support persons who accompany patients to office appointments will adhere to the following restrictions: Support persons cannot be ill with seasonal flu or COVID-19 symptoms, including: shortness of breath, coughing, fever, chills, headache, vomiting, sore throat, muscle aches, or diarrhea. Support persons must be older than the age of 14. Support person will be asked to remain in the room with the patient.